

April 28, 2024

Williston-Immanuel United Church
Portland, Maine

THE LASSO LECTIONARY



SERMON SERIES



APRIL 21 - MAY 12



Welcome

***Gathering Song**

“I Believe”

Franke Laine

**I believe for every drop of rain that falls a flower grows.
I believe somewhere in the darkest night a candle glows
I believe for everyone that goes astray someone will come to show the way
I BELIEVE
I BELIEVE
I believe above the storm the smallest prayer will still be heard
I believe that someone in the great somewhere hears every word
Every time I hear a newborn baby cry, or touch a leaf or see the sky
Then I know why I BELIEVE**

Words to ponder

“Even loss and betrayal can bring us awakening.”

-Attributed to the Buddha

Music for Centering

“Were You There?”
World Premiere

Ivan Burnett, Jr.

Opening Words

Kyle Green

***Hymn**

“A Mighty Fortress Is Our God”

Martin Luther

The God Box

Scripture

Mathew 26:14-16 (NIV)

Message

Betrayal Revisited

**Please rise in body or in spirit.*

Prayers of the People (Please use any name for God you prefer for the Lord's prayer)

**Our Father, who art in heaven, hallowed be thy name,
thy kingdom come, thy will be done, on earth as it is in heaven.
Give us this day our daily bread.
And forgive us our debts, as we forgive our debtors.
And lead us not into temptation but deliver us from evil.
For thine is the kingdom, and the power, and the glory, forever. Amen.**

Invitation to the Offering

Choral Offering

“Rain Down”

Jaime Cortez, arr. John Carter

(Refrain)

**RAIN DOWN, RAIN DOWN, RAIN DOWN YOUR LOVE ON YOUR
PEOPLE, RAIN DOWN, RAIN DOWN, RAIN DOWN YOUR LOVE, GOD OF
LIFE.**

Faithful and true is the word of our God. All of God's works are so worthy of trust. God's mercy falls on the just and the right; full of God's love is the earth.

(Refrain)

We who revere and find hope in our God Live in the kindness and joy of God's wing. God will protect us from darkness and death;

God will not leave us to starve. (Refrain)

God of creation, we long for your truth; You are the water of life that we thirst, Grant that your love and your peace touch our hearts, all of our hope lies in you.

(Refrain)

***Doxology**

“Doxology for Humanity”

Kurt Struckmeyer

**Praise faith that keeps us ever strong
Praise hope that triumphs over wrong
Praise dreams that make our spirits rise
Praise voices raise in joyful cries. Amen.**

Offertory Prayer

*Hymn

“Leave It There”

Charles Albert Tindley

Announcements

Benediction

Postlude

“Deep River”

arr. Larry Schackley

WIUC Calendar

Today after worship *Nibbles and Knowledge* People from various non-profits that WIUC supports will join us for a special coffee hour after church on Sunday, April 28. We'll use a “speed dating” format, so everyone will rotate every five minutes or so. We expect to have people from:

Sunday, May 5 *Communion Sunday* 10 am Worship -- The Power of Being Vulnerable (The Lasso Lectionary) 11:30 Soul Food (Scripture discussion) In-person and on Zoom. (Link on wiuc.org) Contemplative spring walk with Rev. Nicole Diroff

May 13- 15, 20-22 Kate away, church office closed

Sunday, May 19 *Pentecost Sunday*--Baptisms, Welcoming of New Members, All Church Gathering Potluck afterwards 10 am Worship - "The Three Rs-- Repentance, Redemption, Reconciliation" (The Lasso Lectionary) 11 am Coffee hour. No Soul Food (Scripture discussion) today.

A Mighty Fortress Is Our God

439

Martin Luther, c. 1529

Ps. 46

Transl. Frederick H. Hedge, 1853; adapt. Ruth Duck, 1981



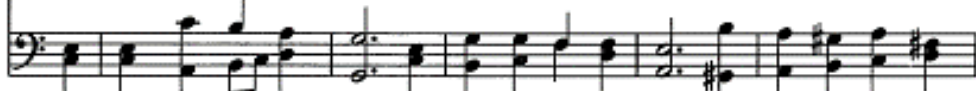
1 A might - y for - tress is our God, a bul - wark nev - er fail - ing,
2 Did we in our own strength con - fide, our striv - ing would be los - ing,
3 And though this world with dev - ils filled should threat - en to un - do us,
4 That word be - yond all earth - ly powers for - ev - er is a - bid - ing;



Our pres - ent help a - mid the flood of mor - tal ills pre - vail - ing.
But there is one who takes our side, the One of God's own choos - ing.
We will not fear for God has willed the truth to tri - umph through us.
The Spir - it and the gifts are ours, for Christ is with us sid - ing.



For still our an - cient foe does seek to work us woe with craft and pow - er
You ask who that may be? Christ Je - sus sets us free! With might - y power to
The powers of e - vil grim, we trem - ble not for them; their rage we can en -
Let goods and kin - dred go, this mor - tal life al - so; the bod - y they may



great, and armed with cru - el hate, on earth with - out an e - qual.
save, vic - to - rious o'er the grave, Christ will pre - vail tri - um - phant.
dure, for lo, their doom is sure: one lit - tle word shall fell them.
kill; God's truth shall tri - umph still; God's reign en - dures for - ev - er.



There is speculation that this psalm paraphrase was written in 1527 when Martin Luther's friend was burned at the stake, or in 1529, when Lutheran German princes protested the revocation of their liberties. It has been translated into more than fifty languages.

Tune: EIN' FESTE BURG (isometric) 8.7.8.7.6.6.6.6.7.

Martin Luther, c. 1529

Harm. The New Hymnal for American Youth, 1930; alt.

For another version, see 440

1. If the world from you with-hold of its sil - ver and its gold,
 2. If your bod - y suf - fers pain, and your health you can't re - gain,
 3. When your en - c - mics as - sail, and your heart be - gins to fail,
 4. When your youth - ful days are done, and old age is steal - ing on,

and you have to get a - long with mea - ger fare,
 and your soul is al - most sink - ing in de - spair,
 don't for - get that God in heav - en an - swers prayer,
 and your bod - y bends be - neath the weight of care,

just re - mem - ber in his Word how he feeds the lit - tle bird,
 Je - sus knows the pain you feel, he can save and he can heal,
 he will make a way for you, and will lead you safe - ly through,
 he will nev - er leave you then, he'll go with you to the end,

take your bur - den to the Lord and leave it there.

WORDS: Charles Albert Tindley, ca. 1906

MUSIC: Charles Albert Tindley, ca. 1906; arr. by Charles A. Tindley, Jr., 1916

LEAVE IT THERE

7 7 11 D with Refrain

© 1916, renewed 1944 Hope Publishing Co.

Continued

Refrain

Leave it there, (leave it there) leave it there, (leave it there)

take your bur - den to the Lord and leave it there.
(leave it there)

If you trust and nev - er doubt, he will sure - ly bring you out;

take your bur - den to the Lord and leave it there. (leave it there)

CHURCH STAFF

Rev. Reba Delzell, *Pastor*

Matt Emkey, *Director of Music & Organist*

Denise Calkins, *Assistant Music Director & Pianist*

Kate McDade, *Office Manager, Communications*

Breelyn McClerland, *Childcare*

Benjamin Watzak, *Building Manager*

Our Publications:

**Weekly All Church Email
(ACE)**

Monthly *Insight* Newsletter



New Here?

Fill out our “Wanna do some good?” form in the pew rack and place it in the offering plate. We will donate \$5 in your name to our Special Offering this month and get you on our mailing list. Or you can simply text **WIUC** to **84576** to receive our **All Church Email (ACE)**.

Who are we? Williston-Immanuel United Church is an inclusive Christian community that promotes faith, fellowship, social justice and love, compassionately reaching out to our broader community, celebrating our diversity, and affirming each individual's spiritual journey.

Acceptance without conditions, affirmation without discrimination

these are the goals of Williston-Immanuel United Church.

“Every child matters, If we fail our children, we are bound to fail our present, our future, faith, cultures, and civilizations as well”

-Kailash Satyarthi

Did You Know... Greater Portland Family Promise has been operating a family shelter out of Williston- Immanuel since July 2023. Currently we have 9 families, and 30 individuals staying with us. Unfortunately, the families will all need to leave by July 2024, as the lease with Family Promise will be up. Although there might be a slight extension, Family Promise is diligently working to have all these families placed in transitional housing or housed by that time. Finding a place to live can be overwhelming and the Family Promise staff promise to help every step of the way. Case managers help families to understand their budget, complete housing applications, provide professional reference and act as a guarantor. They also provide tenant education and act as a liaison between the family and the landlord. Family Promise is unsure of what their model will look like come August 2024, but the one thing that won't change is their desire and efforts to support families experiencing homelessness. Family Promise transforms the lives of families going through hardship because every child deserves a home. The Outreach Committee will send \$100 “seed” money to Family Promise of Greater Portland. If you would like to help this amount grow, use the special pew envelopes, donate on the wiuc.org web page or send your gift to the church Attn: Linda Russell. Please indicate that your gift is for the April Special Offering. Thank you for your generosity. -The Outreach Committee